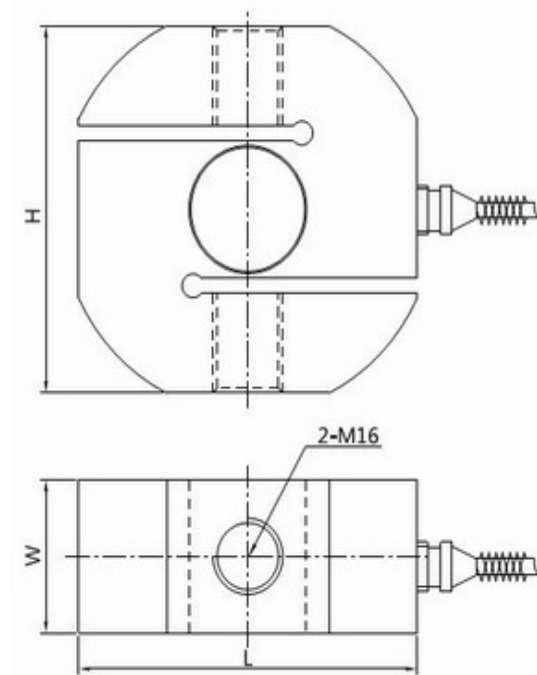


### Features:

- \* Comply with OIML Standard
- \* Alloy Steel Construction
- \* Used in Crane Scales, Tensile Application, etc.

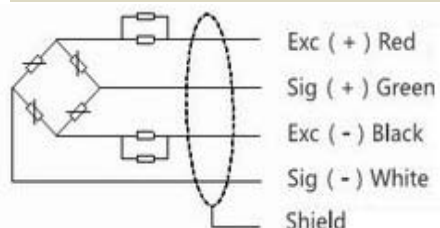


### RoHS

CAP(kg)	L	H	W
1000	69	69	22
2000	76.8	76.8	32

### TS507 Specification:

Capacity	1000, 2000(Kg)	Operating Temp. Range	-20 - + 60°C
Accuracy	C3	Recommended Excitation	5 - 12VDC
Output Sensitivity	2.0±5%mv/v	Max. Excitation Voltage	18VDC
Zero Balance	±2%F.S.	Safe Overload	150%F.S.
Combined Error	±0.03%F.S.	Ultimate Overload	200%F.S.
Creep in 30 Minutes	±0.03%F.S.	Insulation Resistance	≥2000MΩ(50VDC)
Linearity Error	±0.028%F.S.	Cable Length	φ5mm*3000mm
Repeatability Error	±0.02%F.S.	Protection Class	IP66
Hysteresis Error	±0.02%F.S.	Wiring Code (4 wires, Braid Shielded, PVC Cable):	
Input Resistance	385±10Ω		
Output Resistance	350±5Ω		
Temp. Effect on Sensitivity	±0.03%F.S./10°C		
Temp. Effect on Zero	±0.05%F.S./10°C		
Compensated Temp. Range	-10 - + 40°C		



### Note:

- \* Cable Length, Capacity and Thread Type Could be Customized according to your requirement.
- \* All specifications subject to change without notice, please confirm before order.